



Image may depict upgrades that are not included in the pricing.

Floor area: 235.37m<sup>2</sup> / 25.34sq |  
Frontage: 11.21 Depth: 24.44m

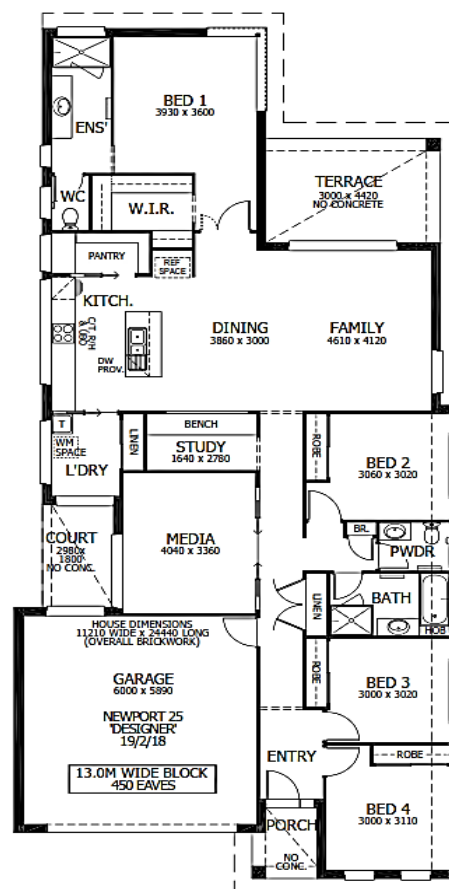


## Newport 25 Package Inclusions

\*This offer only valid in Hunter Valley region

- \* Prestige Facade
- \* Covered Terrace
- \* Upgraded Designer Kitchen
- \* Upgraded Designer Downlighting Package
- \* All Internal Floor Coverings
- \* Media Room, Family Room & Study Nook
- \* Concrete Allowance - Driveway, Porch & Summer Lounges
- \* Flyscreens to all windows & Sliding Doors
- \* Perry Homes "Prestige Inclusions Package"
- \* Upgraded Flick Mixer Package
- \* Wall Mounted Clothesline
- \* Powder Coated Letter Box
- \* TV Antenna

Note: Does not include allowance for Site Costs & BASIX



Lisa Simmonds-Webb  
0458 169 805

[lisa.simmondswebb@perryhomes.com.au](mailto:lisa.simmondswebb@perryhomes.com.au)  
[www.hunterregionhouseandland.com.au](http://www.hunterregionhouseandland.com.au)

