



Image may depict upgrades that are not included in the pricing.

Floor area: 250.74m<sup>2</sup> / 26.99sq |  
Frontage: 12.67m Depth: 22.67m

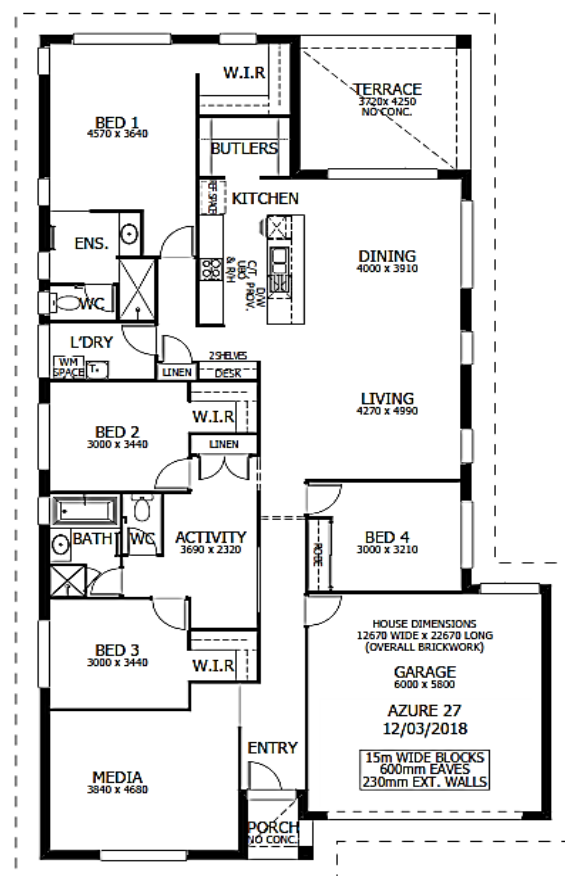


## Azure 27 Package Inclusions

\* This Offer only valid in Hunter Valley Region

- \* Prestige Façade
- \* Covered Terrace
- \* Upgraded Designer Kitchen
- \* Media Room
- \* Activity Room
- \* Upgraded Designer Downlighting Package
- \* All Internal Floor Coverings
- \* Concrete allowance for Driveway, Porch & Terrace
- \* Flyscreens to all windows & sliding doors
- \* Perry Homes "Prestige Inclusions Package"
- \* Upgraded Flick mixer package
- \* Wall mounted Clothes Line
- \* Powder coated letter box
- \* TV Antenna

Note: Does not include allowance for Site Costs & BASIX



**Noel Simmonds**

0418 169 800

noel.simmonds@perryhomes.com.au

www.hunterregionhouseandland.com.au



"Disclaimer: Due care has been taken with the siting, design and pricing of the proposed dwelling based upon current information and is correct at time of publication. This however, may change as a result of other influences such as; developer covenants, local, state or federal government requirements etc. Also, undetermined site conditions such as; tree removal, acoustics, bushfire, rock etc. may be excluded unless otherwise specified. Terms and conditions apply to campaigns and special offers. Plans and images are for illustrative purposes only and may depict features such as landscaping, furniture, window furnishings and lighting that are not included in the package price or which are not available from Perry Homes. Land price is correct at time of printing and subject to change without notice. Perry Homes reserve the right to withdraw this package at any time without notice. Perry Homes (Aust) Pty Ltd. QBCC Act Lic. No. 718748 NSW Lic No. 110970C." Package valid until 31/12/2019