



Image may depict upgrades that are not included in the pricing.

Floor area: 236.89 m² / 25.50 sqs|
Frontage: 12.9 Depth: 16.19

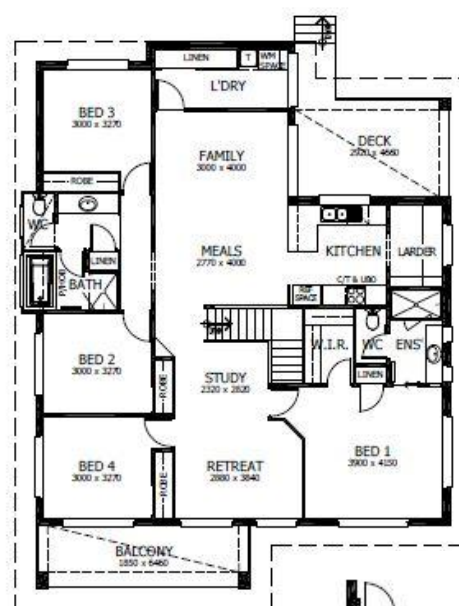


Gallery 25 Package Inclusions

* This offer only valid in Hunter Valley region

- * Prestige Facade
- * Covered Terrace
- * Upgraded Designer Kitchen
- * Upgraded Designer Downlighting Package
- * All Internal Floor Coverings
- * Concrete Allowance - Driveway, Porch & Terrace
- * Study, Retreat & Deck
- * Flyscreens to all windows & Sliding Doors
- * Perry Homes "Prestige Inclusions Package"
- * Upgraded Flick Mixer Package
- * Wall Mounted Clothesline
- * Powder Coated Letter Box
- * TV Antenna

Note: Does not include allowance for Site Costs & BASIX



UPPER FLOOR



LOWER FLOOR

Lisa Simmonds-Webb

0458 169 805

lisa.simmondswebb@perryhomes.com.au

www.hunterregionhouseandland.com.au

hunter
region house & land

"Disclaimer: Due care has been taken with the siting, design and pricing of the proposed dwelling based upon current information and is correct at time of publication. This however, may change as a result of other influences such as; developer covenants, local, state or federal government requirements etc. Also, undetermined site conditions such as; tree removal, acoustics, bushfire, rock etc. may be excluded unless otherwise specified. Terms and conditions apply to campaigns and special offers. Plans and images are for illustrative purposes only and may depict features such as landscaping, furniture, window furnishings and lighting that are not included in the package price or which are not available from Perry Homes. Land price is correct at time of printing and subject to change without notice. Perry Homes reserve the right to withdraw this package at any time without notice. Perry Homes (Aust) Pty Ltd. QBCC Act Lic. No. 718748 NSW Lic No. 110970C." Package valid until 30/09/2019